

What to do when the HL works for a short while then stops, or when it gets stuck on one side or the other and won't reciprocate.

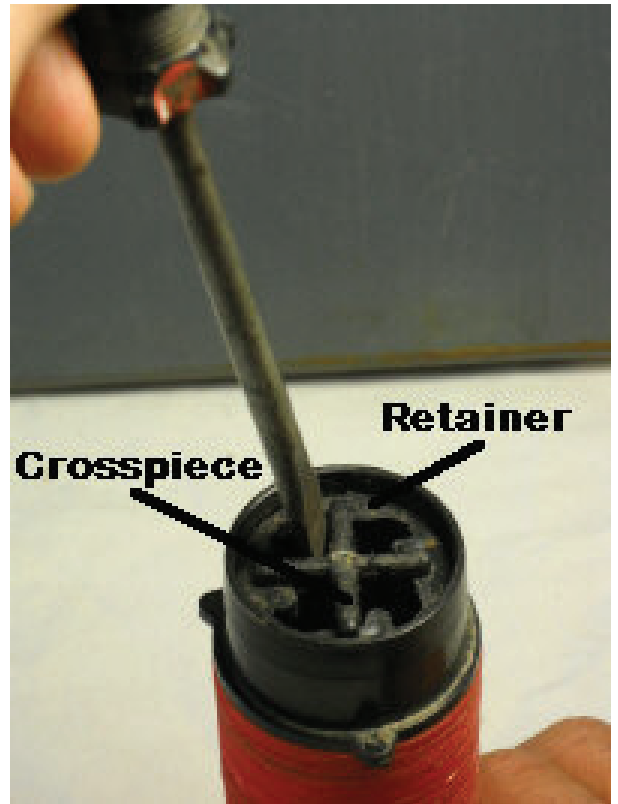
There are two main reasons for this:

1) The filter element is clogged. The HL will run for a short while then stop. Pushing the buttons on the Valve Body won't help this. See if the HL will run without the filter element installed. If it then runs normally, your filter element is clogged and may need a deep cleaning.

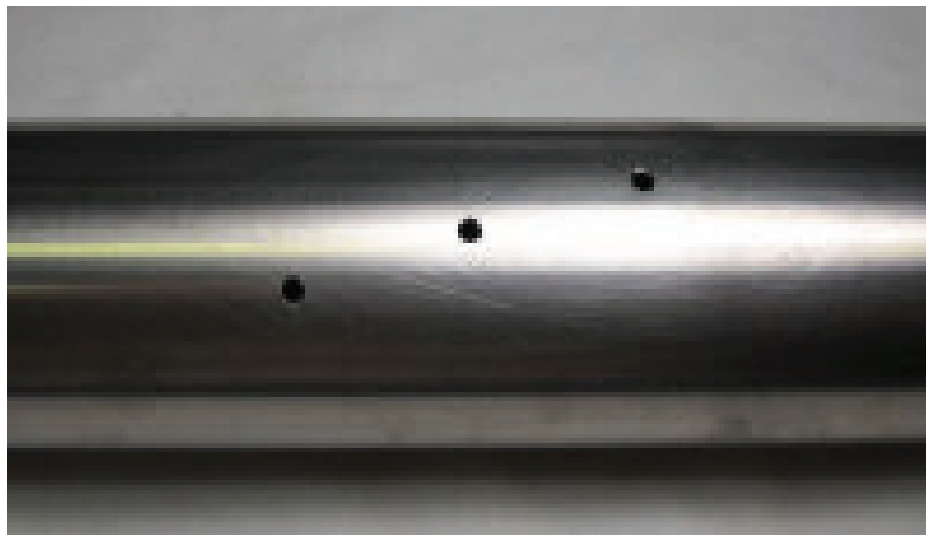
How to Deep Clean the Filter Element:

1) The Filter Element is composed of many small disks with grooves in them. Algae or other material may get stuck to the grooves and cannot be washed off by spraying with a hose or swishing the element around in water.

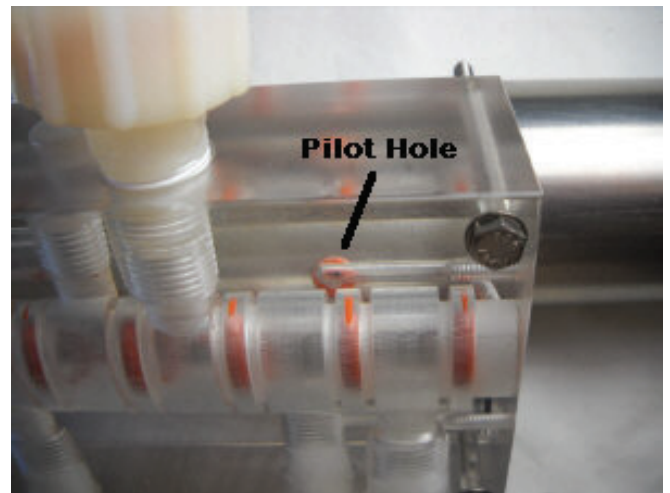
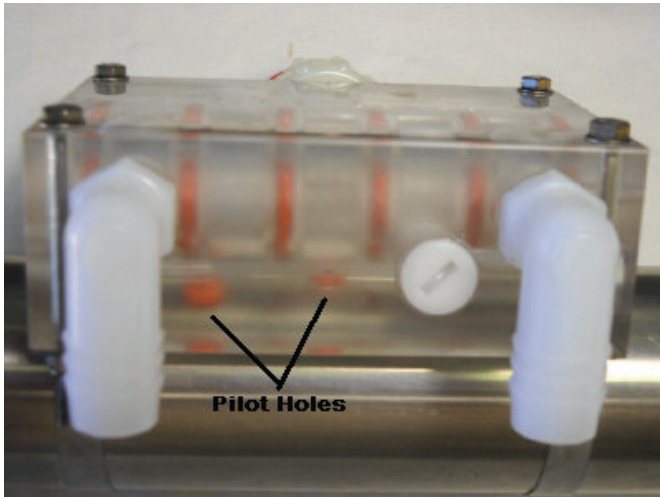
2) If it can't be cleaned by normal methods you have to take the element apart and clean the disks with a toothbrush. Use a screwdriver to pry the retainer away from the crosspiece. Hold the other end of the element to keep the crosspiece from turning. The cap will come off and you can then remove the disks.



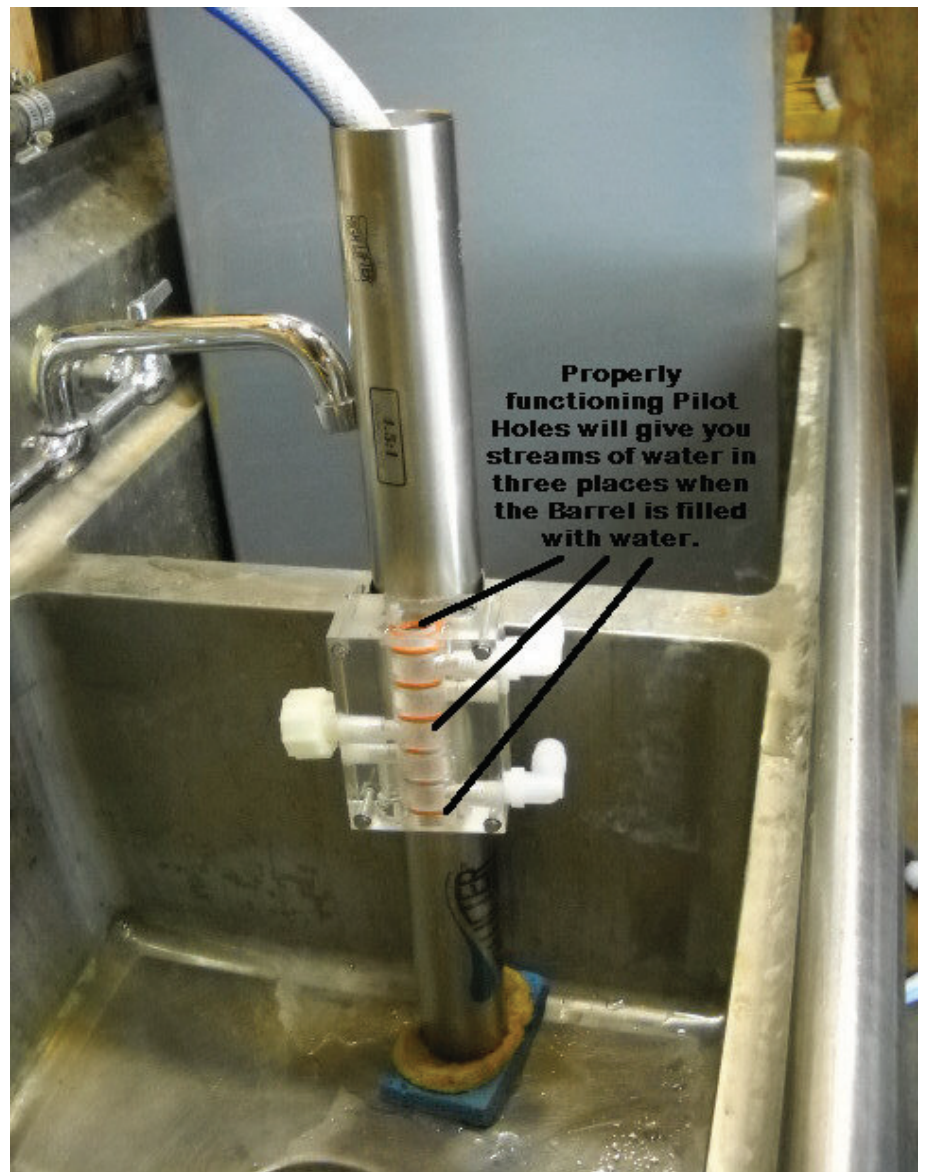
If the Filter Element is clean but the HL gets stuck on one side or the other, then you may have a clog in the Pilot Holes. There are three Pilot Holes underneath the Valve Body. They are small so any little bit of dirt can clog them. Do not take the Valve Body off to clean these holes.

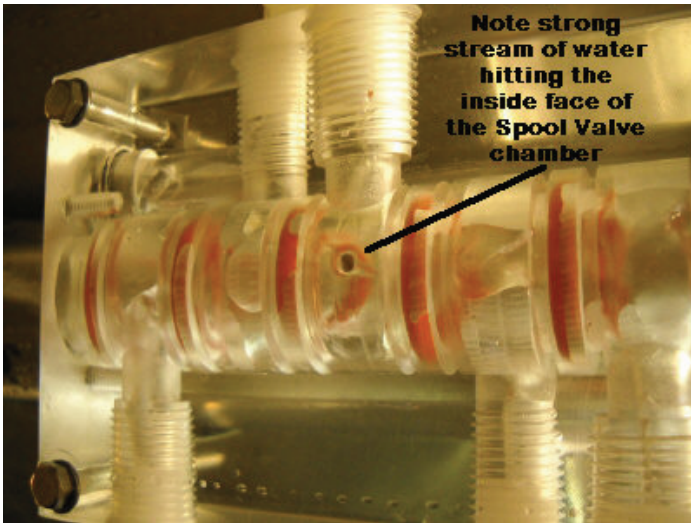


The Pilot Holes have small orange o-rings over them.



Usually the center Pilot Hole gets clogged. You can see if one of these is clogged by disassembling the HL, upending it in a sink, and filling it with water. Turn the flow from the hose down to a trickle so it doesn't overflow the barrel. You should see a stream of water ejecting from three locations inside the Valve Body. Do not remove the Valve Body from the Barrel as it can be difficult to re-align the parts.





You can unclog the Pilot Holes with a tool shaped as below. You can make this out of a piece of wire taped to a stick. Find the three Pilot Holes inside the Barrel and insert the tool into them to push out the dirt. Then flow more water into the Barrel and recheck.

